



HEALTHCARE VALUE PROPOSITION

SURGE CAPACITY

GET STARTED



INTRODUCTION



DALE CLARKE
EXECUTIVE VICE PRESIDENT

SNC-LAVALIN IS PROUD OF THE SUPPORT WE PROVIDE GLOBALLY. WE ARE ONE OF THE FEW COMPANIES THAT HAS PROVEN EXPERIENCE RESPONDING TO EMERGENCY SITUATIONS, LIKE THE COVID-19 PANDEMIC. WE SET UP TURNKEY FACILITIES TO COMBAT SURGES IN HEALTHCARE REQUIREMENTS.

SNC-Lavalin has proven experience responding to emergency situations. With our partners, we can provide an immediate, alternative care site hospital surge solution for treating COVID-19 patients. Our COVID-19 surge support is designed to augment the local healthcare capacity by providing an avenue for existing hospitals and the community to relocate, reduce, and decompress their patient cases.

WE OFFER:

- › An accessible surge capacity solution, including facilities, medical equipment and supplies, operations and maintenance, and essential wrap-around services to meet all the treatment needs of COVID-19 patients
- › Experience with Regulatory bodies, and the understanding that no two locations are the same
- › Established global supply chain and procurement, to rapidly source in times of crisis



CURRENT STATE

WITH COVID-19 OUTBREAKS OCCURRING, AND THE THREAT OF ADDITIONAL WAVES, COUNTRIES NEED TO BE PREPARED TO DEAL WITH SURGES.

As our connected world learns to cope with COVID-19, the threat of outbreaks is a growing concern, and resulting caseloads can eventually overwhelm the existing healthcare systems. We have a sustainable lifecycle process in place today to mobilize and support for COVID-19 surges. Our process deploys at the point of need both quickly and efficiently.

MOBILIZATION

Our approach allows us to engage with local health care providers and authorities to quickly plan, design, and deploy our program management approach while engaging the global supply chain. We have the resources in place to quickly design the appropriate solution to solve the infrastructure challenge, ranging from new facilities, to modular facilities, to repurposing existing infrastructure. We have the material and service vendors in place to mobilize and our procurement model can meet any supply needs, including equipment, medical supplies, and pharmaceuticals globally.

We support and maintain the provision of health care services by providing a fully operational and sustainable facility, allowing front-line workers to focus on delivering care. We provide ancillary services including supply chain replenishment, provision of medical equipment, logistics, security, cleaning, call center services, and health and safety services.

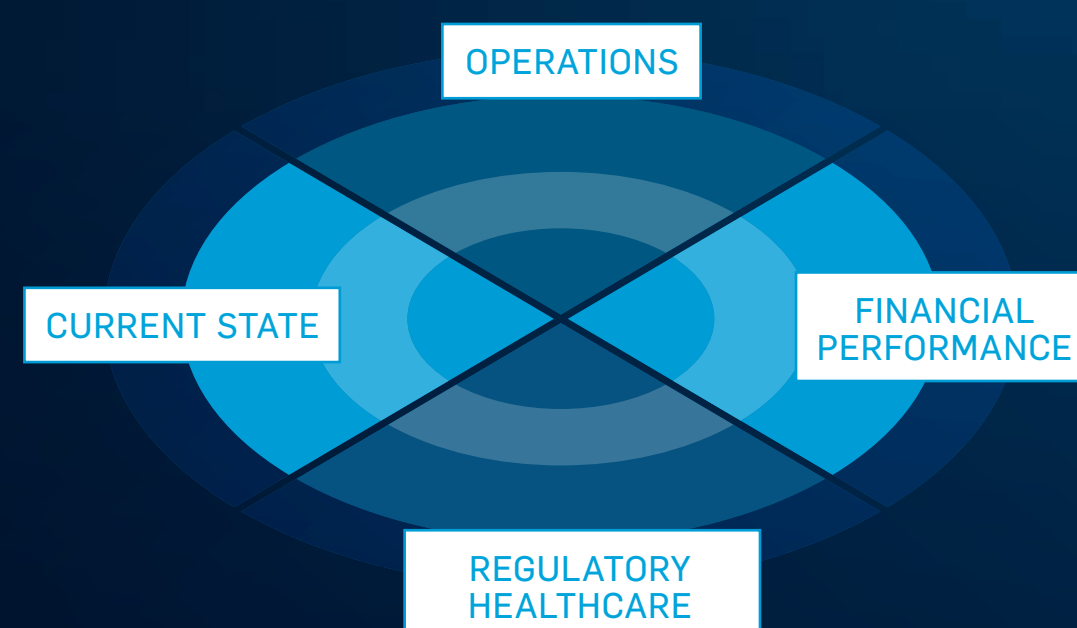
SUSTAINABLE USE OF SURGE RESOURCES

We provide a sustainable and cost-effective approach to providing accessible surge capacity. We believe in economic viability through reusability, and our program management approach supports a repeating lifecycle. When health needs have been fully addressed, we return the deployment facility to its original state, or provide a value-add conversion for the owner. The deployment is then at a stand-ready point for future deployment, either for another wave or to deploy in a different region. We can remain ready to provide continuity of operations plans in case the facility is required to stay active.



HEALTH CHECK

SNC-LAVALIN CAN PROVIDE AN IMMEDIATE, ALTERNATIVE SURGE SOLUTION FOR TREATING COVID-19 PATIENTS. WE PROVIDE COMPLETE ACCESSIBLE HOSPITAL-SURGE SOLUTIONS WITH INFRASTRUCTURE AND WRAP-AROUND SERVICES.



TURNKEY DELIVERY OF ACCESSIBLE SURGE SOLUTIONS

We can provide solutions to meet surge needs. We are experts in the engineering of new and existing buildings, including design-build, construction management, and operations & maintenance. We can create a new facility, either with or without ICU care beds, or provide an alternative surge solution, where we repurpose an existing facility to fit surge needs. We can also provide testing facilities as required. Using remote state-of-the-art technologies, we can enhance the decision-making process, through digital reality capture technology, improved visualization, and data integration services. We provide all utilities, operations and maintenance staff, equipment, and pharmaceuticals as needed. Once the surge is complete, we recycle the infrastructure to be used in future medical situations.

SUPPLY CHAIN AND PROCUREMENT SOLUTIONS TO SOURCE NEEDED SUPPLIES

We have an existing global network of suppliers and can support the full procurement lifecycle. Our strong relationships with our established supply chain can support the full end-to-end procurement during medical surges, including equipment, supplies, and pharmaceuticals.

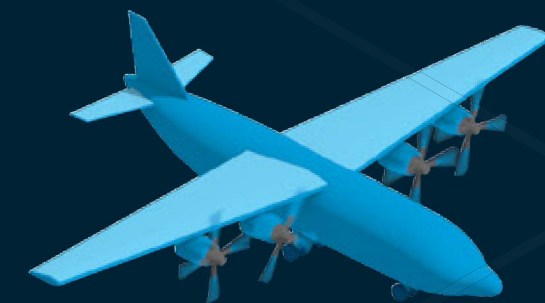
REGULATORY COMPLIANCE

We can provide a complete end-to-end solution, regardless of the type of facility. We also have the global experience to understand the local regulations around the world and can work with local industry bodies and regulators to provide the medical support needed.



OUR FUTURE PLAN

1 LOCAL INDUSTRY BODIES
AND REGULATORS



2 SUPPLY
CHAIN



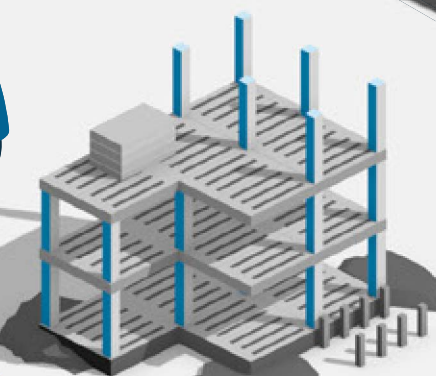
3 OPERATIONS
& MAINTENANCE



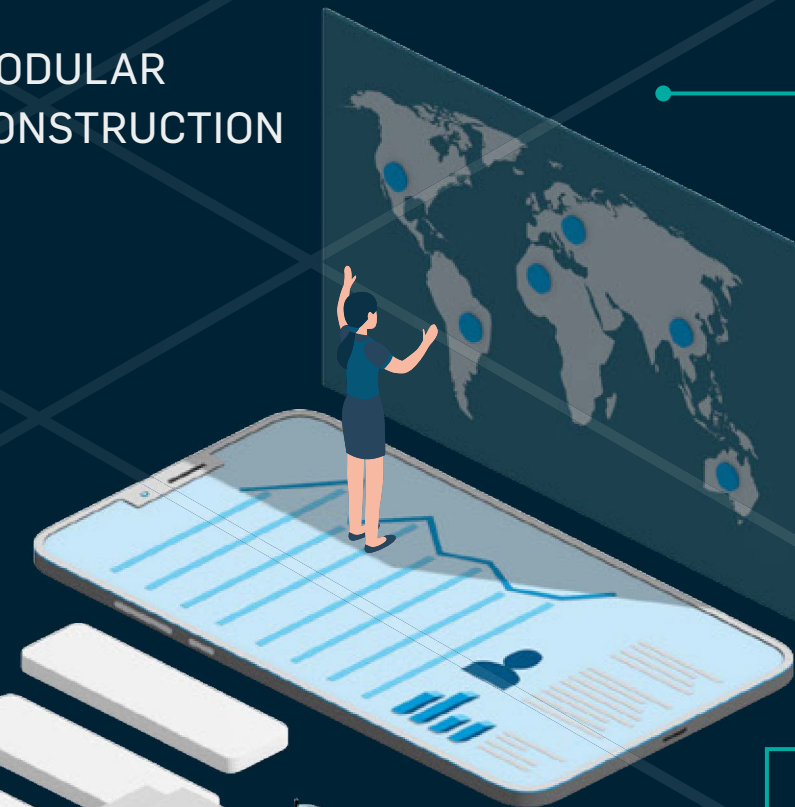
10 TEMPORARY
& CONTAINER
HOSPITALS



9 MODULAR
CONSTRUCTION



8 REACTING TO
RAPID GLOBAL
REQUIREMENTS



7 REPURPOSING
FACILITIES



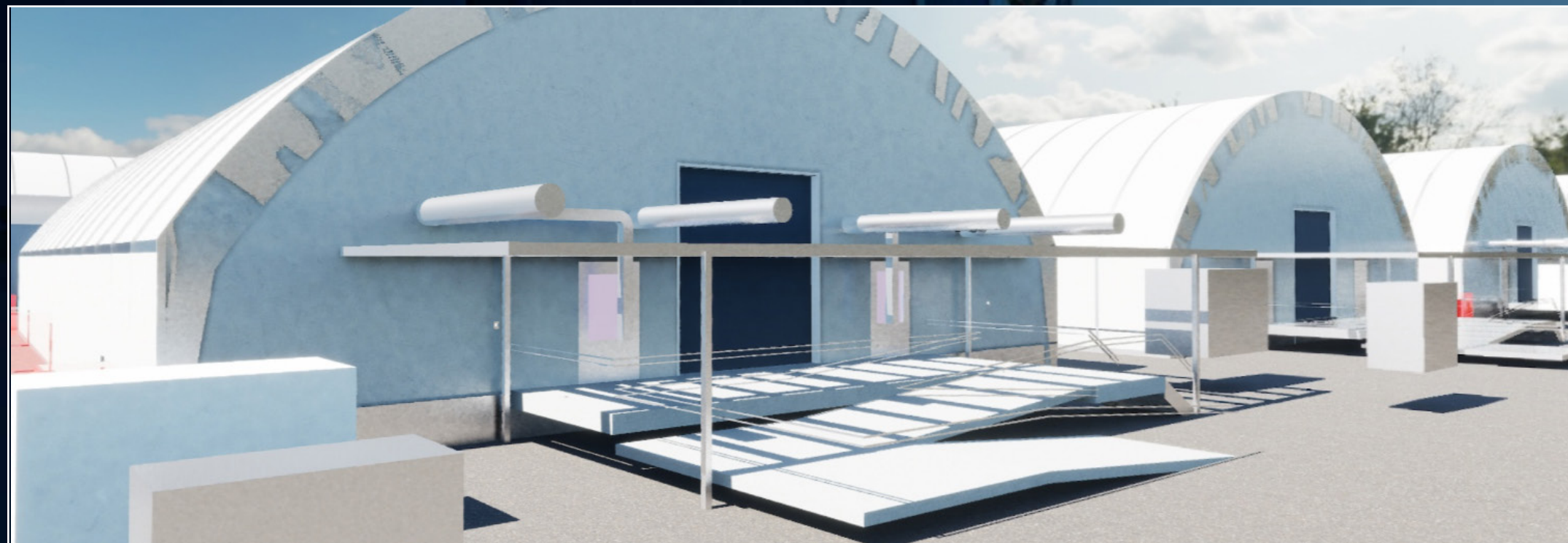
6 ICU ROOMS

5 MOBILE
CARE UNITS



4 NEW HEALTHCARE
FACILITIES





CASE STUDY 1

CANADIAN GOVERNMENT

SUPPORTING THE GOVERNMENT OF CANADA'S HEALTH PREPAREDNESS EFFORTS

Through a joint-venture, SNC-Lavalin was contracted with Public Works and Government Services Canada to construct and deliver COVID-19 Mobile Health Hubs of 100 beds each—including 20 ICU beds—anywhere they may be needed across Canada.

SNC-Lavalin arranged for the delivery, construction, warehousing and sustainment of Mobile Health Units.

"AS A PROUD CANADIAN, FULLY INTEGRATED PROFESSIONAL SERVICES AND PROJECT MANAGEMENT COMPANY, WE ARE HONOURED TO BE ABLE TO ASSIST THE FEDERAL GOVERNMENT IN THIS ENDEAVOR—THAT IS TO HELP ENSURE THE HEALTH AND SAFETY OF CANADIANS DURING THIS CRITICAL AND UNPRECEDENTED TIME."

IAN L. EDWARDS
PRESIDENT AND CEO
SNC-LAVALIN

100

Mobile Health Hub beds constructed, including 20 ICU beds deployable across Canada



CASE STUDY 2

NHS NIGHTINGALE HOSPITAL, BRISTOL

SUPPORTING COST MANAGEMENT INITIATIVES IN BRISTOL, UK

The NHS Nightingale Temporary Hospital in Bristol, UK was built to treat COVID-19 patients. The facility was housed within the 4,000m² Exhibition and Conference Centre at the University of West England and will comprise 300 intensive care beds.

We provided cost management services for the hospital conversion and supported North Bristol NHS Trust in achieving best value for money while delivering the project safely and on time. Additionally, we provided progress valuation to support suppliers and prompt payments throughout the project.

4,000m²

of conference space rapidly converted to treat COVID-19 patients.

300

intensive care beds delivered safely, on time and to best value.



CASE STUDY 3

MIAMI BEACH CONVENTION CENTRE

ASSISTING IN FLORIDA WITH ALTERNATE CARE SITES (ACS)

Due to the surge of COVID-19 cases in Florida, we were contacted to support constructing an ACS located at the Miami Beach Convention Center (MBCC). The scope of services included on-site inspection/observation, reporting and overall quality control reviews of the construction contractor drawings, submittals and construction.

The \$22.5 million ACS initially will support 450 patients, with 50 dedicated negative pressure isolation rooms for acute COVID-19 cases.

The ACS includes emergency generators, oxygen outlets to every patient bed, medical air and vacuum to all isolation beds, redundant HVAC systems, specific air pressurization, medical staff showers, on-site laboratories and an on-site pharmacy. We are currently on stand-by to expand the facility to 900 beds.



\$22.5m

Alternative care site
will support 450
patients.

INSPECTION
AND OBSERVATION

REPORTING

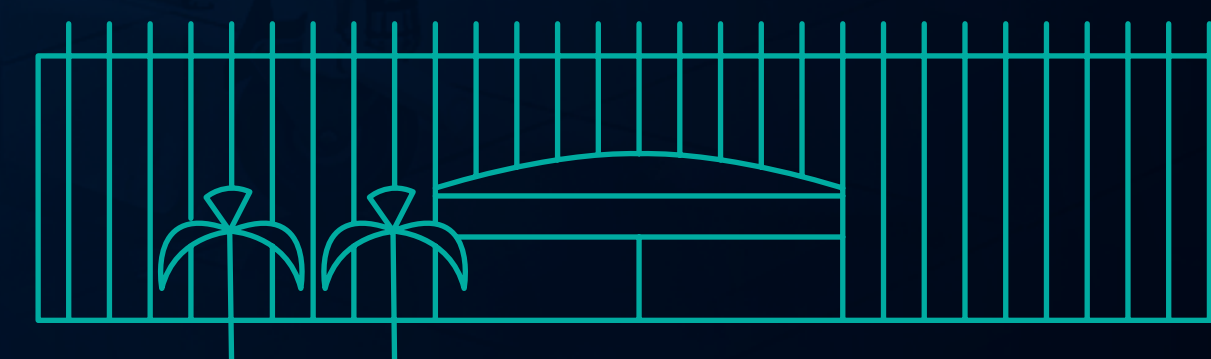
OVERALL QUALITY
CONTROL

50

Negative pressure
isolation rooms for
acute COVID-19 cases.

900

Total number of beds
we are on stand-by to
expand the facility to.



SNC-LAVALIN LEGACY

WHO WE ARE

FOUNDED IN 1911, SNC-LAVALIN DELIVERS END-TO-END PROJECT SOLUTIONS, PIONEERS NEW TECHNOLOGIES, AND IS COMMITTED TO ACHIEVING BETTER WAYS OF WORKING. THE COMPANY EMPLOYS APPROXIMATELY 47,000 PEOPLE FROM OFFICES IN 50 COUNTRIES, AND HAS ANNUAL REVENUES OF \$10.1 BILLION, WITH A BACKLOG OF \$15.6 BILLION COMPANY-WIDE.

OUR SERVICES

We are a leading provider of emergency response and related services, including comprehensive health care and surge capacity support. SNC-Lavalin offers preparedness, response, and recovery capabilities that are established, experienced, and ready to be deployed globally. We have global experience with public health disasters, including those associated with biological and viral contaminants, and man-made and natural disasters of all kinds. Federal, regional, and municipal governments rely on SNC-Lavalin and our team of experts in times of need.

OUR SERVICES INCLUDE:

Emergency and incident management response: Includes all management services to federal, state, local and private entities:

- › Program management for implementation of medical facilities, medical outfitting, transition, and activation of personnel, equipment planning, asset management and equipment maintenance
- › Design oversight and construction management: Oversight for shelters, medical, and support facilities for surge needs
- › Logistics and planning support: Distribution network and logistics support plans for critical materials needed to support the response

AMERICAS
16,000 employees

EUROPE
12,000 employees

ASIA PACIFIC
4,500 employees

MIDDLE EAST & AFRICA
17,500 employees

Our experience with healthcare projects is vast. SNC-Lavalin has provided engineering services for more than 20 major healthcare projects which cover a broad range of care, clinical departments and research facilities, including McGill University Health Center Campus Glen, the New Restigouche Hospital Center, and new hospital complex on the site of the Hôpital l'Enfant-Jésus, scheduled to open in 2025. The most recent projects include the state-of-the-art technology and equipment as well as the most innovative and energy-efficiency solutions.



CONTACT

GET IN TOUCH

Please email for enquiries HEALTHCARE@snclavalin.com
or email one of our regional contacts for **Canada**,
the **United States** or the **United Kingdom**.



CHRISTOPHER SWANN

VICE PRESIDENT
MAJOR PROJECTS

+1 (514) 214-4133

EMAIL



RON PRUZINSKY

SECTOR VICE PRESIDENT
HEALTH AND INSTITUTION

+1 972 588 3241

EMAIL



NICK JONES

MANUFACTURING AND INDUSTRIAL
SECTOR DIRECTOR

+44 (0)7795 953 141

EMAIL

